



**Chicago
Pneumatic**



CPC 40-60 G

People. Passion. Performance.

CPC 40-60 G 40-60hp / 30-45kW

A proven design mixed with additional customer value and user comfort

The CPC 40-60 G is part of a design platform which has been in the market since 2012, guaranteeing you complete peace of mind as this is truly a tested design. The range relies on four major pillars which make it stand out:

Reliability

- Solid gearbox transmission eliminating transmission losses and coupling maintenance.
- No need for belt tensioning due to the gear drive.
- Our in-house designed air ends, today running without any issues in 15.000 compressors worldwide.
- The use of a Siemens motor, one of the most reputed brands in the market.

Workplace unit

- Footprint reduction of 25%.
- A compact machine offering you more flexibility and space
- Lower noise level so the compressor can be in the workplace or close to the point of use.
- An all-in-one solution covering your quality air needs: You can add on an integrated dryer, filters, water separators and drains.

Simplicity

- Reduced amount of parts making the unit easier and cheaper to service.
- Neatly organized interior which allows for a more straightforward cooling flow.
- The ES 4000 controller grants you full control and easy operation. (The graphic version is available as option)

Energy efficiency

- A significantly lower pressure drop due to the elimination of valves downstream of the air end and the repositioning of the outlet grating.
- The radial cooling fan operates in a much more efficient way.
- The selected Siemens IE3 motor is known for its energy efficient operation.



Solid gearbox

This design has 24 million trouble-free endurance hours in the field.



Radial cooling fan

Positively contributing to energy efficiency and noise level.



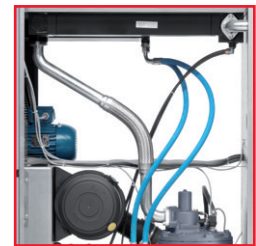
Simple set-up

Smart positioning of the service parts for great accessibility and a more straightforward cooling flow.



Compact design

A 25% footprint reduction compared to the previous generation granting you space and flexibility.



Cooler maintenance

The coolers can easily be serviced by simply removing two small panels.

Technical Table	📏 [l/min]				🔧		🔊	👤	⏪	
	7bar version	8 bar version	10 bar version	13 bar version	HP	kW				
Base mounted 400/3/50*										
CPC 40 G	5949	5392	4954	4250	40	30	Y/D	66	626	1310x890x1790
CPC 50 G	6989	6499	6115	5319	50	37	Y/D	67	683	1310x890x1790
CPC 60 G	8206	7742	7136	6257	60	45	Y/D	68	692	1310x890x1790