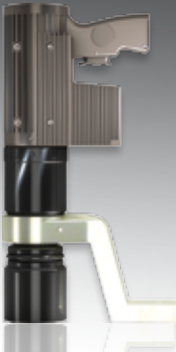


PRODUCT RANGE



THERE ARE MANY TECHNIQUES TO TIGHTEN BOLTS. WE OFFER THE RIGHT TOOL FOR YOUR APPLICATION.

- ✓ **ELECTRIC** (Electric torque multipliers)
- ✓ **PNEUMATIC** (Pneumatic torque multipliers)
- ✓ **HYDRAULIC** (Hydraulic torque multipliers)
- ✓ **MANUAL** (Manual torque multipliers)



#### **ELECTRIC TORQUE MULTIPLIERS**

Electric torque multipliers by alkitronic are ideal where high torques, fast operating speed, high precision or a high number of joints are demanded. Especially where an extreme fast assembly of joints is required. The IP54 rated tools protect against moisture and dust. From 100 Nm to 45,000 Nm.



#### **HYDRAULIC TORQUE WRENCHES AND PUMPS**

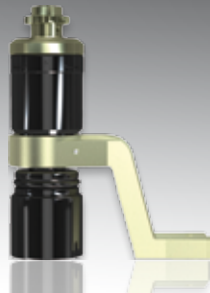
Hydraulic wrenches are ideal when heavy bolt connections with large threads need to be tightened in areas difficult to access and with high forces. Also for applications in areas exposed to explosion hazards. Our fast hydraulic pumps speed up your work flow and thus save time and money. Up to 80,000 Nm.

There is no substitute for the perfect torque multiplier. Whether on construction sites, assembly or production: To obtain the perfect torque, the best possible method should be used. Using alkitronic's universal torque multiplier program you do not have to compromise in performance, accuracy, efficiency, productivity and safety. The unique quality of our torque multipliers made in Germany gives you a leading edge in performance.



#### **PNEUMATIC TORQUE MULTIPLIERS**

Forget impact wrenches with torque setting. Unlike impact wrenches our tools do not "strike", they rotate continuously. This produces greater torque accuracy of the bolted joints and greater tool life. Also for use in hazardous areas! Up to 48,000 Nm.



#### **MANUAL TORQUE MULTIPLIERS**

Manual torque multipliers by alkitronic replace hazardous and inaccurate impact wrenches, pipe extensions as well as other inefficient solutions. An anti-wind-up ratchet prevents a backwind when tightening; this is fitted for safer operation of the tools. From 200 Nm to 50,000 Nm.

# Electric Torque Multipliers

## EFCip / ECWip



From 60 to 6,500 Nm.  
Water resistant  
ECWip = angled version.

## EFC / ECW



From 60 to 5,000 Nm.  
ECW = angled version.

## EF / EFW



From 400 to 42,000 Nm.  
EFW = angled version.  
Upon request water resistant design.

## Plus versions



With LCD display for combined torque/angle procedure.

## R / SG



For bolting connections on plate heat exchangers.

## series ECip-N



With extensions for applications i.e. on deep rims.

Company founder Albert Kipfelsberger invented the electric torque multiplier and patented it in 1984, to access the advantages compared to hydraulic torque wrenches: i.e. continuous rotating instead of slow ratcheting operation, greater accuracy by precise reaching of the torque, more reliable technology and lower running costs.

- Greater accuracy due to automatic motor shut-off
- Extremely high rundown speed, two to three times faster than hydraulic tools
- The efficient brushless synchronous motor creates a greatly reduced risk of failure and offers maximum flexibility with up to 38 adjustable torque values
- Models with protection class IP54 are immune to moisture, dust and even rain
- Greater repeated accuracy due to continuous rotation of hex nuts
- The tools can be used in all international main grids (100-253V / 45-66 Hz) with constant torque precision; ideal for portable generators

# Hydraulic Torque Wrenches and Pumps

## AS



Up to 80,000 Nm.

## AX



Up to 49,240 Nm with interchangeable hexagon link.

## Pump NOVA



Electric driven hydraulic pump up to 700 bar, max. 15 l/min.

## Pump EHPC



Electric driven hydraulic pump. Up to 700 bar.

## Pump LHP



Pneumatic hydraulic pump. Up to 700 bar. EX certified – upon request.

## Accessories



Flexible solutions for your applications.

For certain industrial bolting applications hydraulic wrenches are sometimes the first choice due to application demands; i.e. in cases of restricted and difficult to access bolt connections. Our wrenches and pumps offer:

- For bolting applications that require powerful performance in tight spaces. The flat design is made to fit in small spaces without sacrificing power. This gives you better accessibility, better power and reduced repair costs
- Due to trouble-free reaction torque accuracy is achieved without interference by lateral forces
- Fast and simple changing of the hexagon link ensures flexible operation of the tool
- The hydraulic pumps are extremely robust and cater for high work rates
- Integrated motor protection prevents overload damages
- Patented technology (EP 1400313, US 6,966240)
- Electric pumps NOVA, EHPC can be used worldwide in all power supplies

# Pneumatic Torque Multipliers

## CLS



From 60 to 3,500 Nm.  
Fast and compact.

## CLD



From 160 to 9,800 Nm.  
Comfortable and rotating.

## CLS 2



From 120 to 48,000 Nm  
with speed and power gear.

## CLV



With remote control for  
1 - 4 torque multipliers, up  
to 48,000 Nm.

## RCL



For bolting connections on  
plate heat exchangers.

## LS-N



With extension for low-  
lying joints.

Pneumatic torque multipliers by alkitronic have more to offer than impact wrenches or ratchet hydraulic wrenches. They rotate continuously and do not strike. Tightening of the components is made smoother, faster and more accurate.

- The torque accuracy is considerably higher than when using impact or hydraulic wrenches
- The compact design and the cast aluminium housing ensure high strength. The tools are almost indestructible
- The high-performance gear ensure fast operation speed
- The simple one-finger rocker switch ensures a more comfortable operation
- All pneumatically driven torque multipliers can be EX certified upon request (II 2 G D c IIB T6)
- Optional: noise reduction filters, 2 speed tools, assembly, etc.

# Manual Torque Multipliers, Flange Spreader, Thread Cleaner

HG



From 200 to 50,000 Nm. Equipped with anti-windup ratchets allowing jobs to be performed easily, efficiently and safely. No additional power source is required. "Manpower" will do!

## Flange Boy



Ideal for separation of piping for inspection works/maintenance. Easy and absolutely safe mechanical separation of piping flanges.

## Thread Boy



Solid or corroded threads prevent to achieve accurate torque values. The Thread Boy thoroughly cleans bolts, screws and nuts. This saves valuable time.

alkitronic manual torque multipliers replace impact wrenches, pipe extensions and other insufficient and hazardous solutions in the field of torque tightening. They are superior to ordinary torque wrenches. alkitronic manual multipliers never require more than 400 Nm input, and can reach torque values up to 50, 000 Nm.

- High level of operation safety
- Low energy input, accurate transfer of high torque
- Precision anti-wind-up ratchet allows efficient operation with very short movements and allows short assembly time
- Robust power gear for highest possible operational demands, produced in a chipless precision process (casting)
- The integrated shearing pin protects against input overload

## Mounting Documentation System (MDS)



- Retrieving and archiving of charts
- Setting of individual data sets
- Transfer of preset bolting parameters to the torque tool
- Controlling and graphical monitoring
- Torque measurement directly on the bolt (integrated sensors)
- Documented bolting with torque/angle procedure
- Recording of the actual bolting values

## Calibration System (calibra)



- For precise torque measurements of manual, electric, air-driven and hydraulic torque tools
- Your alkitronic electric torque multipliers can be adjusted to your specific torque values, via the integrated infrared serial interface
- Static-dynamic torque measurement up to 200,000 Nm

**alki TECHNIK GmbH**  
Unterlettenweg 4  
85051 Ingolstadt

Fon: +49 (841) 97499-0  
Fax: +49 (841) 97499-90  
E-Mail: [info@alkitronic.com](mailto:info@alkitronic.com)  
[www.alkitronic.com](http://www.alkitronic.com)