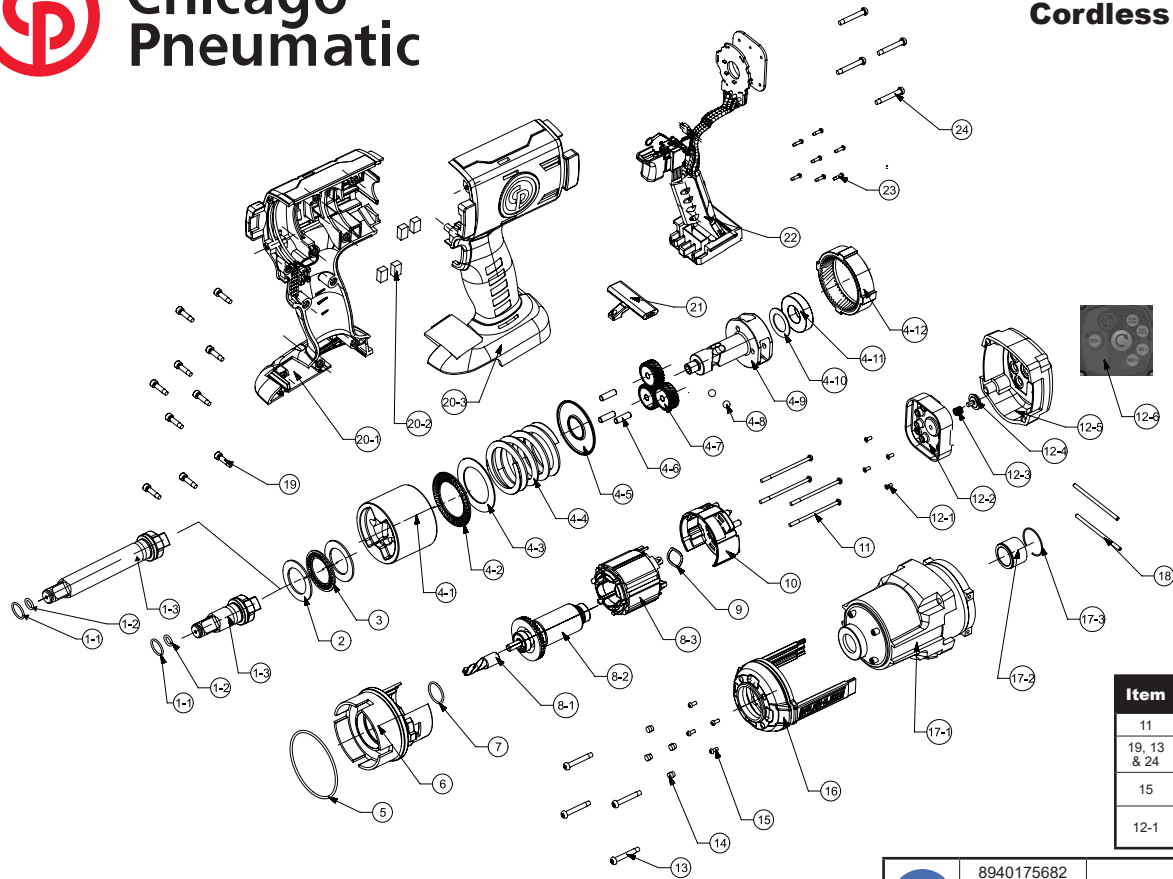




**Chicago  
Pneumatic**

**CP8849 & CP8849-2**  
Cordless impact wrench  
Serie C & D



Item	Glue	tightening torque	
11	/	0.5 ft.lbs	0.69 Nm
19, 13 & 24	/	1 ft.lbs	1.37 Nm
15	RITE-LOKE TL77 - 0.2g	0.36 ft.lbs	0.5 Nm
12-1	RITE-LOKE TL77 - 0.2g	0.22 ft.lbs	0.3 Nm

	8940175682	Nameplate
	8950900061	Warning Label
	8940175118	Safety Information

Ref	CP Part No.	Description	Q'ty
<b>A</b>	<b>8940175686</b>	<b>Gear Case assembly</b>	
14		Rubber	4
15		M Screw M2.5	4
16		LED Assembly	1
17-1		Die-casting Gear Case	1
17-2		Bush SCM440	1
17-3		Retaining Ring	1
<b>B1</b>	<b>8940175689</b>	<b>Short Anvil Assembly for CP8849</b>	
1-1		Retaining Ring	1
1-2		O-ring	1
1-3		1/2" Short Anvil	1
<b>B2</b>	<b>8940175884</b>	<b>Long Anvil Assembly for CP8849-2</b>	
1-1		Retaining Ring	1
1-2		O-ring	1
1-3		1/2" Long Anvil	1
<b>C</b>	<b>8950251279</b>	<b>Anvil Collar Kit</b>	
1-2		O-Ring	5
1-1		Retaining Ring	5
<b>D</b>	<b>8940175690</b>	<b>Gear Box Assembly</b>	
4-1		Impactor	1
4-2		Thrust Bearing	1
4-3		Washer	1
4-4		Compression	1
4-5		Washer	1
4-6		Planet Gear Pin	3
4-7		Planet Gear	3
4-8		Ball	2
4-9		Driving Shaft	1
4-10		Washer	1
4-11		Ball Bearing	1
4-12	8940175749	Ring Gear	1
<b>E</b>	<b>8940175691</b>	<b>Main PCBA</b>	
8		Motor Assembly (Include 8-1, 8-2 & 8-3)	1
22	8940175750	Main PCBA ass'y	1

Ref	CP Part No.	Description	Q'ty
<b>F</b>	<b>8940175700</b>	<b>End Cap Assembly</b>	
12-1		M3 Screw for Speed Plate	4
12-2		Plastic Rear PCB Box	1
12-3		Spring for Speed Button	1
12-4		Plastic Speed Button	1
12-5		Die-casting End Cap	1
12-6	8940175953	Instruction Label (speed select)	1
<b>G</b>	<b>8940175702</b>	<b>Housing Assembly</b>	
19	8940175703	Housing Screw	10
20-1		Plastic Housing Cover	1
20-2		Silicance Rubber Cushion	4
20-3		Plastic housing support	1
	8950900061	Warning label	1
<b>H</b>	<b>8940175685</b>	<b>Front LED Assembly</b>	
14		Rubber	4
15		M screw M2.5	4
16		Front LED Assembly	1
<b>I</b>	<b>8940175855</b>	<b>Washer Kit</b>	
2		Stamping, Flat washer	2
3		Needle Bearing INAAXK2539	1

5	8940175688	Oil seal o-ring	1
6	8940175693	Motor Mounting	2
7	8940175694	O-Ring	1
9	8940175696	Wave Washer	1
10	8940175697	Motor Rear Cover	1
11	8940175698	M3 Screw (Set of 4)	1
13	8940175704	ST Screw M4.5 (Set of 4)	1
14	8940175683	Rubber	4
15	8940175684	M screw M2.5	4
18	8940175687	Motor Mounting Pin	2
19	8940175703	Housing Screw	10
21	8940175692	F/R Button	1
23	8940175699	M2.3 Screw	7
24	8940175701	M4 Screw (Set of 4)	1

**Recommended Maintenance Tools**

It is recommended to treat the battery tool contacts every 6 months with contact lubricant  
Electrolube : ERCG53A35SL

**Recommended Accessories**

Battery  
8940172261 20V 4,0Ah  
8940173636 20V 6,0Ah

8940172262 CHARGER 20V EUROPE  
8940172286 CHARGER 20V USA  
8940172287 CHARGER 20V UK  
8940172288 CHARGER 20V AUS  
8940174305 CHARGER 20V KOREA

