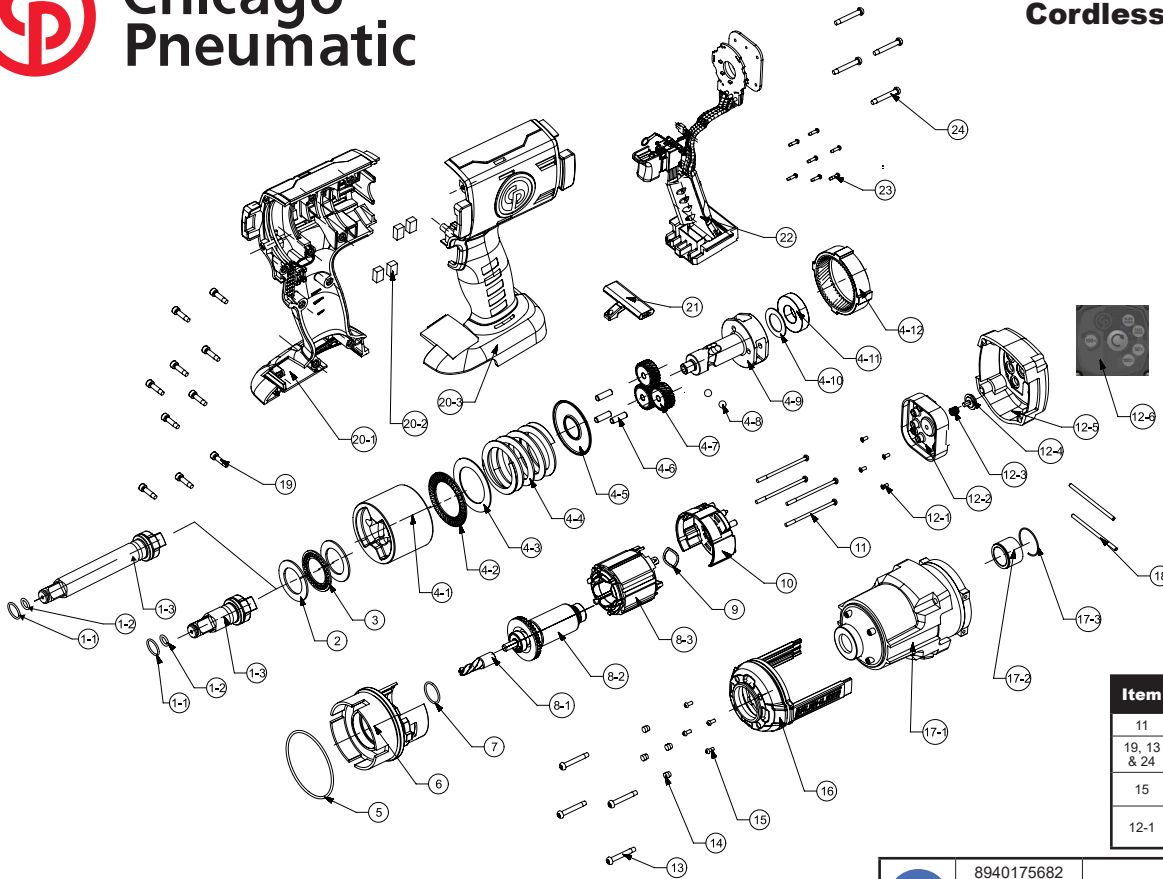





**Chicago
Pneumatic**

CP8849 & CP8849-2
Cordless impact wrench
Serie C



Item	Glue	tightening torque	
11	/	0.5 ft.lbs	0.69 Nm
19, 13 & 24	/	1 ft.lbs	1.37 Nm
15	RITE-LOKE TL77 - 0.2g	0.36 ft.lbs	0.5 Nm
12-1	RITE-LOKE TL77 - 0.2g	0.22 ft.lbs	0.3 Nm

	8940175682	Nameplate
	8950900061	Warning Label
	8940175118	Safety Information

Ref	CP Part No.	Description	Q'ty
A	8940175686	Gear Case assembly	
14		Rubber	4
15		M Screw M2.5	4
16		LED Assembly	1
17-1		Die-casting Gear Case	1
17-2		Bush SCM440	1
17-3		Retaining Ring	1
B1	8940175689	Short Anvil Assembly for CP8849	
1-1		Retaining Ring	1
1-2		O-ring	1
1-3		1/2" Short Anvil	1
B2	8940175884	Long Anvil Assembly for CP8849-2	
1-1		Retaining Ring	1
1-2		O-ring	1
1-3		1/2" Long Anvil	1
C	8950251279	Anvil Collar Kit	
1-2		O-Ring	5
1-1		Retaining Ring	5
D	8940175690	Gear Box Assembly	
4-1		Impactor	1
4-2		Thrust Bearing	1
4-3		Washer	1
4-4		Compression	1
4-5		Washer	1
4-6		Planet Gear Pin	3
4-7		Planet Gear	3
4-8		Ball	2
4-9		Driving Shaft	1
4-10		Washer	1
4-11		Ball Bearing	1
4-12	8940175749	Ring Gear	1
E	8940175691	Main PCBA	
8		Motor Assembly (Include 8-1, 8-2 & 8-3)	1
22	8940175750	Main PCBA ass'y	1

Ref	CP Part No.	Description	Q'ty
F	8940175700	End Cap Assembly	
12-1		M3 Screw for Speed Plate	4
12-2		Plastic Rear PCB Box	1
12-3		Spring for Speed Button	1
12-4		Plastic Speed Button	1
12-5		Die-casting End Cap	1
12-6	8940175953	Instruction Label (speed select)	1
G	8940175702	Housing Assembly	
19	8940175703	Housing Screw	10
20-1		Plastic Housing Cover	1
20-2		Silicance Rubber Cushion	4
20-3		Plastic housing support	1
	8950900061	Warning label	1
H	8940175685	Front LED Assembly	
14		Rubber	4
15		M screw M2.5	4
16		Front LED Assembly	1
I	8940175855	Washer Kit	
2		Stamping, Flat washer	2
3		Needle Bearing INAAXK2539	1

5	8940175688	Oil seal o-ring	1
6	8940175693	Motor Mounting	2
7	8940175694	O-Ring	1
9	8940175696	Wave Washer	1
10	8940175697	Motor Rear Cover	1
11	8940175698	M3 Screw (Set of 4)	1
13	8940175704	ST Screw M4.5 (Set of 4)	1
14	8940175683	Rubber	4
15	8940175684	M screw M2.5	4
18	8940175687	Motor Mounting Pin	2
19	8940175703	Housing Screw	10
21	8940175692	F/R Button	1
23	8940175699	M2.3 Screw	7
24	8940175701	M4 Screw (Set of 4)	1

Recommended Maintenance Tools

It is recommended to treat the battery tool contacts every 6 months with contact lubricant
Electrolube : ERCG53A35SL

Recommended Accessories

Battery
8940172261 20V 4,0Ah
8940173636 20V 6,0Ah

8940172262 CHARGER 20V EUROPE
8940172286 CHARGER 20V USA
8940172287 CHARGER 20V UK
8940172288 CHARGER 20V AUS
8940174305 CHARGER 20V KOREA
8940173638 DUAL CHARGER 12-20V

